



Building Our Future

The Campaign for MDI Hospital



A LEGACY WORTH BUILDING

Those who came before us built a hospital that has stood through storms, seasons, and time—anchored by compassion, community, and care. Now, it's our turn to carry that legacy forward.

With the Building Our Future Campaign, we are meeting the urgent challenges of today while preparing for the needs of tomorrow. Together, we will transform and modernize MDI Hospital to deliver care that is more accessible and resilient for everyone who calls this Island home.

This is our moment. What we build today will shape the health and well-being of this Island for generations to come. Together, we can create a legacy that lasts.

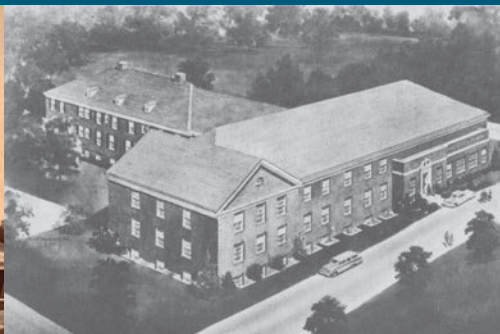
With deep gratitude,

Christina Maguire

Chrissi Maguire
President & CEO, MDI Hospital

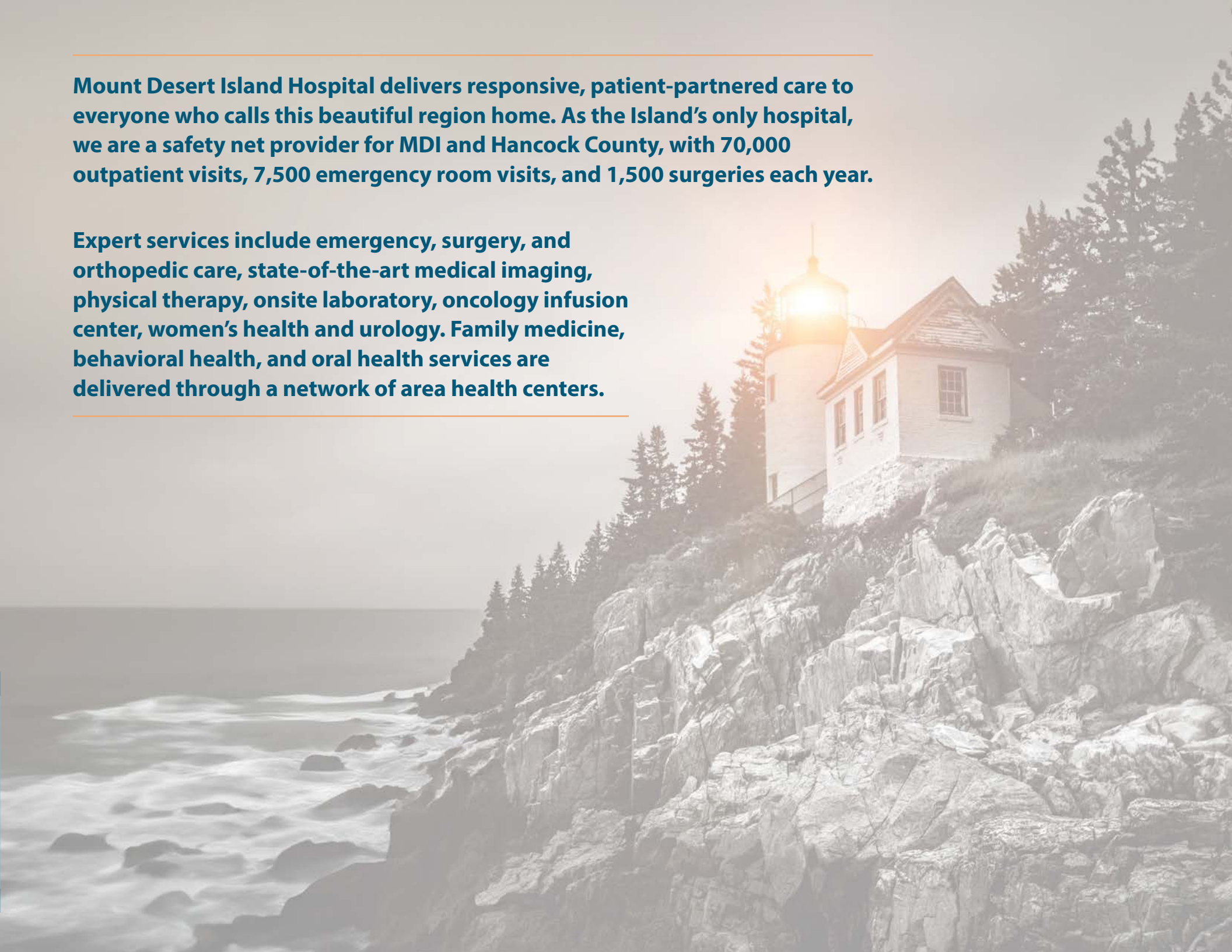


“This campaign is our chance to honor the past, meet the moment, and shape the future of care on MDI.”



Mount Desert Island Hospital delivers responsive, patient-partnered care to everyone who calls this beautiful region home. As the Island's only hospital, we are a safety net provider for MDI and Hancock County, with 70,000 outpatient visits, 7,500 emergency room visits, and 1,500 surgeries each year.

Expert services include emergency, surgery, and orthopedic care, state-of-the-art medical imaging, physical therapy, onsite laboratory, oncology infusion center, women's health and urology. Family medicine, behavioral health, and oral health services are delivered through a network of area health centers.



PROTECTING WHAT MATTERS MOST

MDI Hospital has always been more than a building. It's where our community finds strength, compassion, and care when it matters most. That's why I'm proud to serve as Chair of the Building Our Future Campaign.

Healthcare needs are growing, and rural hospitals like ours face real challenges. But we have a once-in-a-generation opportunity to invest in the care, compassion, and connection that define this hospital.

This campaign is about keeping high-quality, local care close to home—for our neighbors, our health, and our future.

Now is the time to act. Your support today will help secure the care we all rely on, for generations to come. I hope you'll join me in building something that lasts.

Kimberly Swan

Kimberly Swan
Campaign Chair



“This hospital has been there for the people I love when it mattered most. I’m not just supporting this campaign, I’m investing in my community and the Island I call home.”

VISIONARY LEADERS

Lighting the Way Forward

We are deeply grateful to these leaders whose vision and generosity are transforming the future of healthcare on our island. Their commitment is ensuring that compassionate, high-quality care will always be here for our community.

Ruth Colket

Lou & Tom Glenn

Arlene & Bob Kogod

Lillie Johnson

Susan & David Rockefeller

Diana Davis Spencer & Abby Moffat

Kimberly Swan

Dick Wolf



POWERING OUR FUTURE

Built on a sustainable, resilient foundation

The future we're building is anchored by our new sustainable, climate-resilient Central Utility Plant, made possible through the visionary leadership and generosity of The Manton Foundation and The Wilbur & Hilda Glenn Family Foundation, joined by the powerful support of the Davis Family Foundation, Cornelia Cogswell Rossi Foundation, and Lunder Foundation.

This transformational upgrade expands our capacity, reduces our carbon footprint, and decreases reliance on fossil fuels. With its completion in 2025, MDI Hospital has taken a bold step toward a greener, more resilient future, ensuring safe, reliable care for our community in every season, for generations to come.



MDI Hospital's Engineering team celebrate the new sustainable, climate-resilient Central Utility Plant.

WHEN YOU OR A LOVED ONE ARE CRITICALLY ILL OR INJURED ON MOUNT DESERT ISLAND, WHERE DO YOU GO?

Mount Desert Island Hospital stands at the heart of our Island community, providing essential healthcare to the people of MDI and Hancock County—and visitors by the millions who enjoy the rugged natural landscape of coastal Maine. From our main campus to health centers in Bar Harbor, Northeast Harbor, Southwest Harbor, and Trenton, we deliver care with expertise and compassion.

With one roadway connecting Mount Desert Island to the mainland, and the potential for weather conditions that prevent air and sea travel, everyone on the Island depends on MDI Hospital's readiness and ability to provide the best-quality care when they need it most.

MDI Hospital's Emergency Department delivers critical, lifesaving care 24 hours a day, seven days a week, all year round. In the summer months, it adapts to serve an extraordinary 300 percent seasonal surge in patients. Recent severe weather events and the lasting effects of the pandemic have further demonstrated our community's urgent need for a modernized hospital campus that is climate-resilient and future-focused.

The Building Our Future Campaign will create a modern, patient-centered campus with a new state-of-the-art Emergency Department, upgraded surgical suites, and a welcoming Main Street entry—ensuring that when illness or emergency strikes, expert care is always here, close to home.



BOLD VISION, CRITICAL NEED

Since the ED's last renovation, medicine has evolved exponentially, shaped by new technologies and care methods. At 4,677 square feet with only eight care spaces, our ED is small and constrained, with a configuration reminiscent of a previous era in medicine. With an aging population, more acute cases presenting to the ED, and seasonal visitation continuing to break records, MDI Hospital's need for modern, well-equipped emergency and surgical suites is urgent.

As a gateway community to Acadia National Park, Mount Desert Island sees an average of 3.9 million visitors per year, compared to 2.5 million when the Hospital's ED was last improved in 2001. Today, overcrowding scores often reach the 95th percentile during the busy season. With only one critical care room, hallways are sometimes the only available treatment area during peak times of day.

Developed with extensive input from our board, healthcare staff, and community members, plans for the new ED at 9,301 square feet have room to grow built-in, ready to meet the needs of tomorrow. To ensure that access to exceptional emergency, trauma, and surgical care will always be available on MDI, it is time to renovate, expand, and modernize our facilities.



WYATT'S STORY

When every second counts



Wyatt Fountaine shoots a lay-up while playing basketball for the Connors Emerson School in Bar Harbor

February 4, 2023 began like any other day for Wyatt Fountaine, until a sudden, sharp pain in his chest brought him to his knees, as he collapsed into the arms of his mother, Stephanie. Within minutes, he was rushed to MDI Hospital's Emergency Department, where Dr. Charlie Hendricks performed emergency surgery to re-expand Wyatt's collapsed lung.

"It was every parent's worst nightmare," Stephanie recalls. It all happened so fast, adds Wyatt's dad, David. "But the doctors and nurses explained everything, and they had him in surgery within 90 minutes. I was very impressed."

After surgery, Wyatt remained in the hospital for evaluation. "It was a life-threatening situation," says Dr. Hendricks. "If not for MDI Hospital, he may not have made it to another institution."

Stephanie remembers the compassion of the ICU nurses: "They took their time with Wyatt and really got to know him. He was recovering, but also missing school, friends, and his championship basketball game. They sat with us while we made posters to cheer on his team. That meant a lot."

A few days later, Wyatt's lung collapsed again, and he had a second successful emergency surgery. He was then transferred to a pediatric thoracic surgeon in Portland, Maine, for specialized care.

"Because of the care I received at Mount Desert Island Hospital, I am here today to share my story and continue to reach for my dreams."

—Wyatt Fountaine, grateful patient of Mount Desert Island Hospital



Wyatt Fontaine pictured with his parents, David and Stephanie Fontaine

Today, Wyatt is thriving. He's running track for MDI High School, and he still spends nearly every day on the basketball court, training and coaching younger players. His dream? To attend Duke University and become a basketball coach. This past winter, he and Stephanie traveled to North Carolina to cheer on fellow Mainer, Cooper Flagg, at a Duke game.

Reflecting on his experience, Wyatt says, "I am mentally stronger, and I know I can fight through hard things. I had to have a lot of faith in myself that I could make a full recovery, and I had to have a lot of faith in the doctors, too."

"His lungs are 100 percent and he is healthy as a horse," says Stephanie. "We can't thank MDI Hospital enough for everything they did for Wyatt and our family."

David adds, "This is why it's imperative for MDI Hospital to have a state-of-the-art Emergency Department. Without that, it could be life or death for many people, and you never know when you'll have an emergency."

ED AND PEGGY'S STORY

We know great care, and MDI Hospital delivers it

When Ed Benz joined the MDI Hospital Board of Trustees in 2017, he brought with him decades of experience as an internationally recognized hematologist and President and CEO Emeritus of Dana Farber Cancer Institute. He and his wife Peggy Vettese, an accomplished academic nurse, have spent their careers at world-renowned academic medical centers including Yale, Case Western Reserve, NIH, Penn, Brigham and Women's, Boston Children's, UPMC, Johns Hopkins, and Dana Farber.

But it's here, at MDI Hospital, where they've found something equally extraordinary.

"MDI Hospital is a precious gift to our community," Ed and Peggy say. "We are tough judges of care quality, and what we've experienced here is every bit as excellent as what we've seen in the top institutions across the country."

Over the years, Ed and Peggy have not only received care at MDI Hospital but have referred many friends as well, confident in the hospital's ability to deliver exceptional clinical care with an unmatched personal touch. "MDIH knows what it can and should do, and does it exceptionally well," Ed says. "And just as importantly, it knows when to refer especially complex cases to larger hospitals, always in a timely and thoughtful way."

Still, they see firsthand the strain of limited resources, and the urgent need for investment to sustain and strengthen the



Peggy Vettese and Ed Benz

hospital's future. That's why they are passionate advocates for MDI Hospital's Building Our Future Campaign.

"This campaign is essential," Ed emphasizes. "The planned improvements to the Emergency Department and main entrance will dramatically enhance patient care, safety, and flow—ensuring every patient gets the right care, in the right place, at the right time. These are critical upgrades for a hospital that already delivers extraordinary value to our region".

For Ed and Peggy, MDI Hospital represents the very best of community healthcare: high-quality, compassionate, and deeply committed to those it serves. "This community is incredibly lucky to have MDI Hospital," Peggy says. "Now it's up to all of us to ensure it can continue to thrive, today and for generations to come."



Reimagining Care: Our Innovative, Integrated Approach



We lead. A constant throughout the hospital's history is its culture of clinical excellence, improvement, and innovation. Ranked among the nation's top critical access hospitals, MDI Hospital is a leader among rural healthcare organizations. In a challenging environment for rural care, we bring an unwavering commitment to this community's specific needs and engage in partnerships with regional leaders to stay on course.

We innovate. As an independent hospital, we are flexible, resilient, and fiscally conscientious. In 2022 we added a Philips Ingenia Ambition wide-bore MRI, one of the most advanced MRI units in Maine. Construction of a new energy-efficient central utility plant is a significant upgrade to our infrastructure that will help reduce our carbon footprint and empower sustainable growth.

We educate. Our unparalleled educational programs help augment seasonal staffing, improve care, and benefit long-term recruitment and retention. Affiliations with Penn Medicine, Tufts, Harvard, the University of New England, and others allow us to educate the next generation of physicians, nurses, and clinicians while providing the best-quality healthcare for MDI and surrounding communities.

DAMIAN'S STORY

Care has advanced, our Emergency Department must too



Dr. Flowers earned his medical degree from Oregon Health & Science University and completed his residency at the University of Connecticut. He is a recipient of the Robert Wood Johnson Grant and the Gold Foundation's Humanism in Medicine Award, and is an active member of ACEP, AAEM, and STIPDA.

When Dr. Damian Flowers first arrived at Mount Desert Island Hospital for a temporary assignment just before the pandemic, he didn't expect to stay. But something about this place, its people, its deep sense of community, changed his path. Today, he leads the Emergency Department as Medical Director, committed to the place that drew him in and the patients who keep him inspired.

A board-certified emergency physician with 16 years of experience in Maine, Connecticut, Florida, and Oregon, Damian has cared for patients from every corner of Hancock County and around the world. What sets MDI apart for him are the moments outside the exam room. "I'll be walking downtown, and someone will stop me just to say thank you. That's the kind of place this is."

Over the years, Damian has watched patient needs evolve. "Today, it's common for us to see emergency patients with multiple complex conditions that require a higher level of care." But the hospital's Emergency Department, last renovated more than 20 years ago, hasn't kept pace. "We weren't built for today's volume or complexity. We're treating critical patients in tight spaces, sometimes even in hallways, just to keep up."

"Building the Emergency Department that MDI needs will take all of us. It's a legacy that we can create together, and one we can all be proud of."

—Damian Flowers, MD, Emergency Department Medical Director



One thing hasn't changed, he says. "Our ED is small and outdated, we're delivering 21st-century care in a 20th-century hospital." He sees the Building Our Future Campaign as a vital pathway to the change MDI Hospital urgently needs.

Plans for a new, modern Emergency Department include private treatment rooms, enhanced triage space, behavioral health resources, and specialized zones for trauma and infectious disease management. Access to care will be improved with a new, accessible main entrance on Main Street, a dedicated ED entrance, and a covered ambulance bay.

This project will give our Island the modernized space and equipment we need to care for our community with greater efficiency and safety, Damian says. "A new Emergency Department is a vital step toward a stronger, more resilient future for everyone we serve."

**A dedicated emergency entrance
for when every second counts.**





A covered ambulance bay will provide a sheltered, weatherproof space for emergency arrivals, prioritizing patient care and comfort from the moment you arrive.

LISSA'S STORY

Generations of care, rooted in community

For more than a century, Lissa Hodder's family has returned to Mount Desert Island, drawn by the natural beauty of Acadia and the deep sense of community that defines this place. Since the 1880s, her family's summers have been rooted here, just as their trust has been rooted in MDI Hospital.

"As part of a lively, multi-generational family, it's reassuring to have a hospital nearby," Lissa shares. Even with seven skilled health care providers in the family, Lissa knows: when they're on the Island, they rely on the hospital like everyone else.

Over the years, she and her loved ones have turned to MDI Hospital in moments both routine and life-changing, from broken bones and emergency care to end-of-life comfort surrounded by family.

Their trust in MDI Hospital has been matched by a deep commitment to serve. "MDI Hospital and its people are our friends, always there when our community needs them most," Lissa says. "We do not take that for granted."

Her mother, Elizabeth Owens, served on MDI Hospital's Board of Trustees, generously giving her time to bring patients comfort and fresh-cut flowers, small acts of kindness that reflected a deep commitment to the hospital's mission of compassionate care.

Today, this legacy continues through Lissa, who serves as a valued member of the hospital's Development Committee, inspiring others to help ensure a brighter, healthier future for MDI.

A lifelong educator who has taught students from preschool through Harvard's School of Continuing Education, Lissa believes deeply in investing in the future. For her, supporting MDI Hospital isn't just about access to care, it's about sustaining the spirit of the community she cherishes.

"There are many reasons to support MDI Hospital," she says. "But for me, it comes down to one: community."



Lissa Hodder

"Not every community can have a hospital. And not every community has an independent hospital that makes decisions based on the needs of the community it serves."

—Lissa Hodder, friend of Mount Desert Island Hospital

OUR WAY FORWARD: CAMPAIGN INITIATIVES

Recognizing the breathtaking pace of change in our community, we have strategically planned for future renovation and improvement. The Building Our Future Campaign will raise \$55 Million in capital and programmatic funds to advance these critical initiatives:

Campus Expansion Project

\$40 Million

Emergency Department & Surgical Suites

Renovation and expansion to double our current capacity, newly situated patient entrance, covered ambulance bay, updated surgical suites, and increased patient/family privacy.

Main Entrance

Streamlined registration and entry to medical suites, increased visibility, access from Main Street, and dedicated green space.

Kogod Center for Medical Education

Welcoming housing for rotating medical residents, students, and interns, and conference space for medical education seminars and programming.

President's Strategic Initiatives

\$5 Million

Behavioral & Mental Health

Accelerates expanded access to behavioral and mental health services and outreach for all ages, with special attention to youth (an increasingly vulnerable population in our region).

Medical Education Program & Partnerships

Augments staffing with the best and brightest from top universities including Penn Medicine, Tufts, Harvard, and University of New England; educates the next generation of providers.

Workforce Stability & Housing

Accelerates implementation of proven initiatives to recruit, retain, attract, and educate the healthcare professionals of tomorrow.

Fund for MDI Hospital (Annual Fund)

\$10 Million

Unrestricted Operating Support

Multi-year pledges to ensure continued responsiveness to the community's greatest needs, from oncology and infusion center, to primary and family care.

Total Project Budget

\$55 Million

THE KOGOD CENTER FOR MEDICAL EDUCATION

Visionary support, vital impact

When Mount Desert Island Hospital set out to modernize its campus and meet the evolving needs of our community, Arlene and Bob Kogod were among the first to step forward with a bold vision and extraordinary generosity.

Their \$3 million transformational gift launched one of the first major projects of our campus improvement initiative: the Kogod Center for Medical Education. This essential new facility provides critically needed housing for the rotating medical students and residents who help care for our community and strengthen our staffing model.

With eight dedicated rooms, the Kogod Center supports more than 60 students and residents each year, offering comfortable, welcoming accommodations for rural rotations that range from two weeks to nine months.

Thanks to the Kogods' leadership, MDI Hospital is now better equipped to recruit, retain, and train the next generation of care providers, ensuring that compassionate, high-quality care remains close to home.



The Kogod family celebrates the opening of MDI Hospital's first Medical Education facility.

YOU MAKE THE EXCEPTIONAL POSSIBLE

MDI Hospital is actively planning for a bolder, brighter future. Together we will ensure the ongoing health and vibrancy of our region—expanding access to critical, lifesaving care, enhancing patient experience, and modernizing the hospital’s campus with climate-resilient and resource-efficient design. Given the complex fiscal constraints facing hospitals today, philanthropic support will be the primary determinant in realizing the full scale of this vision.

From the hospital’s inception, forward-thinking philanthropists have made the exceptional possible for healthcare on Mount Desert Island. MDI Hospital’s bold planning has sparked the imaginations of devoted supporters across our community—yet achieving these goals will not happen without the generosity and commitment of everyone who believes in our mission and vision.

Please contact us to learn more about how you can make a difference by ***Building Our Future.***

Chrissi Maguire, *President & CEO*
207.801.5030
chrissi.maguire@mdihospital.org

Oka Hutchins, *Director of Advancement*
207.460.3610
oka.hutchins@mdihospital.org



Building Our Future
The Campaign for MDI Hospital

MDI HOSPITAL BOARD OF TRUSTEES

Martha Wagner, PhD
Chair

Madeleine Braun, PhD, MBA
Vice Chair

Enoch Albert
Chair, Birch Bay Retirement Village

Edward Benz, Jr., MD

Stewart Brecher

Sarah Fina

Damian Flowers, MD
President of Medical Staff

Charles “Chip” Hutchins

Joseph Jacobson, MD

Julian Kuffler, MD

Kathryn Lucchesi

Arthur Martinez

Vince Messer, PhD

Morgan Parady
Secretary

Dean Read

Ed Samek

Louise Soucy, CPA

Noelle Wolf



Mount Desert Island Hospital

10 Wayman Lane | PO Box 8 • Bar Harbor, ME 04609
207.801.5042

Mount Desert Island Hospital Office of Advancement

Chrissi Maguire, *President/CEO*

Oka Hutchins, *Director of Advancement*

Danielle Silverman, *Associate Director of Advancement*

Claire Sasner, *Donor Engagement Officer*

Robyn Clark, *Advancement Officer*

